



# loadlink plus



Known worldwide as the original electronic force measurement device to feature an integral display, the Loadlink Plus has been in production since 1979. Over the years the line has been expanded and the Loadlink Plus is now used on a daily basis for load monitoring and heavy lifts ranging in capacity from 1t to 500t, by a variety of industrial and commercial industries including manufacturing, transportation, agriculture, oil and gas, utilities, aerospace and clean energy.

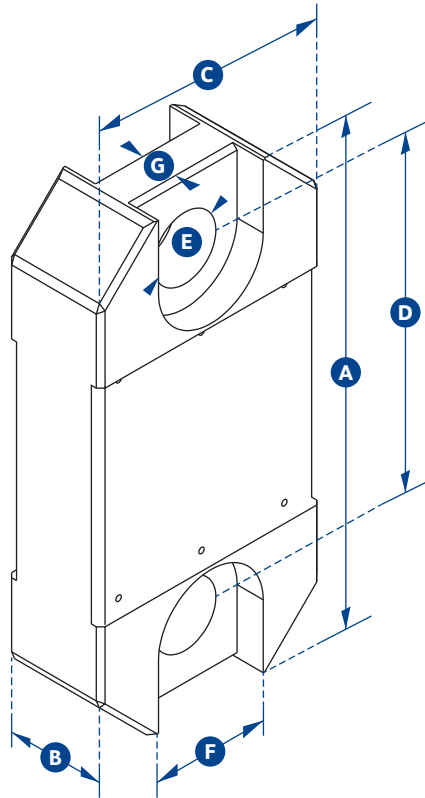
This latest version of the well-known product has advanced features and benefits providing solutions for today's complicated load test and force monitoring needs. The Loadlink Plus features full function push button controls for tare, choice of units (lbs, kg, kN, and tonnes), peak hold, preset tare, audible set-point alarm and an overload counter.

The advanced microprocessor based electronics provide the Loadlink Plus with high speed read rates (500/sec), extreme resistance to industrial level noise and unprecedented stability. This high stability gives the Loadlink Plus over 5,000 divisions and the highest standard resolution of any digital dynamometer on the market today. Constructed of high-grade aircraft quality aluminium, Straightpoint's advanced internal design structure allows the product to once again top the charts with an unmatched weight to strength ratio. Straightpoint's link style dynamometers are on average 30% lighter than our closest competitor with the same safety rating.

## Features and benefits:

- Large LCD display
- High accuracy
- Selectable units
- High resolution
- Peak hold
- Compact size
- Tare
- Lightweight
- Preset tare
- Overload counter
- Audible set point alarm
- RS-485 serial output

# metric specifications



# loadlink plus

| Part Number    | LLP1T                  | LLP2T5  | LLP5T   | LLP12T                         | LLP25T  | LLP35T  | LLP50T | LLP75T | LLP100T | LLP150T | LLP200T | LLP250T | LLP300T |
|----------------|------------------------|---------|---------|--------------------------------|---------|---------|--------|--------|---------|---------|---------|---------|---------|
| Capacity       | 1,000kg                | 2.5te   | 5te     | 12te                           | 25te    | 35te    | 50te   | 75te   | 100te   | 150te   | 200te   | 250te   | 300te   |
| Resolution     | 0.5kg                  | 0.001te | 0.001te | 0.002te                        | 0.005te | 0.005te | 0.01te | 0.01te | 0.05te  | 0.05te  | 0.1te   | 0.1te   | 0.1te   |
| Units          | te, lbs, kg & kN       |         |         |                                |         |         |        |        |         |         |         |         |         |
| Weight         | 1.4kg                  | 1.4kg   | 2kg     | 3.2kg                          | 5kg     | 8.6kg   | 11.5kg | 16kg   | 34kg    | 46kg    | 72kg    | 72kg    | 118kg   |
| Safety Factor  | 12:1                   | 5:1     | 5:1     | 5:1                            | 5:1     | 5:1     | 5:1    | 5:1    | 5:1     | 4:1     | 5:1     | 4:1     | 5:1     |
| Battery Type   | 9v PP3                 |         |         |                                |         |         |        |        |         |         |         |         |         |
| Battery Life   | 80 hours continuous    |         |         |                                |         |         |        |        |         |         |         |         |         |
| Display Type   | 6 digit 25mm LCD       |         |         |                                |         |         |        |        |         |         |         |         |         |
| Operating Temp | -10°C to +50°C         |         |         |                                |         |         |        |        |         |         |         |         |         |
| Accuracy       | ± 0.3% of applied load |         |         |                                |         |         |        |        |         |         |         |         |         |
| Protection     | IP65                   |         |         |                                |         |         |        |        |         |         |         |         |         |
| Dimension A    | 204                    | 204     | 249     | 305                            | 340     | 393     | 424    | 470    | 608     | 670     | 700     | 700     | 806     |
| Dimension B    | 43                     | 43      | 43      | 47                             | 60      | 75      | 75     | 75     | 99      | 99      | 144     | 144     | 150     |
| Dimension C    | 101                    | 101     | 101     | 101                            | 115     | 126     | 163    | 202    | 255     | 303     | 320     | 320     | 426     |
| Dimension D    | 146                    | 146     | 165     | 193                            | 215     | 225     | 230    | 260    | 320     | 360     | 350     | 350     | 350     |
| Dimension E    | 24.5                   | 24.5    | 38      | 47.5                           | 55      | 60      | 76     | 76     | 109     | 109     | 132     | 132     | 160     |
| Dimension F    | 48                     | 48      | 66      | Not available on this capacity |         |         |        |        |         |         |         |         |         |
| Dimension G    | 19                     | 19      | 32      | Not available on this capacity |         |         |        |        |         |         |         |         |         |
| Crosby Shackle | G2130                  |         |         |                                |         |         | G2140  |        |         |         |         |         |         |
| Loading Pin Ø  | 19                     | 19      | 25      | 35                             | 51      | 57      | 57     | 70     | 83      | 95      | 121     | 127     | 152     |